



A M E R I C A N
Accents™

**BOARD
& BATTEN**



RUSTIC EXPRESSION



WH

- .048" thick for superior durability
- Full 7" panel width creates a distinctive look
- Cedar woodgrain emboss with luster
- $\frac{9}{16}$ " panel projection for maximum curb appeal
- Beautiful seamless application
- Twelve traditional colors with exclusive finishes, including four Signature Series colors
- Advance technology in performance and color retention for premium colors.
- Limited Lifetime Transferable Warranty

 **AMERICAN**
*Accents*TM

**BOARD
& BATTEN**



NAPCO VINYL SIDING HAS BEEN APPROVED BY THE NAHB RESEARCH CENTER. This means you can be assured of quality with specific green practice compliance with the International Green Building Standard. Visit www.nahb.org for more details.

ENJOY

Weather the elements in style.

Noreasters. Stiff southern breezes. Midwestern weather that bakes your home one day and dashes it with rain the next. American Accents Board & Batten vinyl siding was painstakingly designed to resist all these weather dynamics and more. It's outdoor and lab tested against



the harshest weather conditions, including winds in excess of 180 mph[†], so you can count on a reliable performance... come what may.

Welcome to sturdy surroundings.

While .048" may not seem significant, it's virtually monumental when it comes to vinyl siding. Because that .048" is the difference between dents and scratches from routine use, and not a scratch or dent in sight. It's also the difference between siding that sags over time, and siding that stays snug and tight to your home, offering maximum protection and minimum worry.

8 Classic Colors.

From rich to subdued, American Accents Board & Batten offers a color to match your style. Each shade was carefully created with a low-gloss finish to complement the cedar woodgrain and highlight the 7" profile. The finish looks and feels like real wood, with color that penetrates the entire panel—not just the surface. Your neighbors will envy your freshly painted “wood” siding... and you'll just smile and say, “thanks.”



Cream



Graystone



Ivory



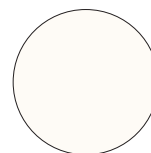
Linen



Mocha



Stone Clay



White



Wicker

Due to printing limitations, product colors may not be exactly as shown. Contact your distributor for actual product samples.

[†] Tested in accordance with ASTM D5206. Wind speed rating will vary depending on specific code region and construction method. Refer to local building codes for detailed requirements concerning allowable wind loads and specific conversion tables for actual wind speed.

Y

ty and dent resistance

distinctive look

low-gloss finish

um rigidity and

cellent color retention,
dark colors

nce to work with

arranty

GREEN GREEN APPROVED
CENTER.

and that this product complies
criteria in the National Green
GreenApprovedProducts.com

**NAPCO® Products
are Earth friendly**



NAPCO® vinyl and metal exterior products can help you meet your sustainable building goals and earn points in leading green building certification programs. NAPCO® strives to contribute to sustainable building practices, improved energy efficiency, or lifecycle benefits of homes as our contribution to the Ply Gem Enviro initiative.



**SUSTAINABLE
RESOURCES:**

- NAPCO® vinyl siding is manufactured from abundant natural resources.
- Vinyl siding generates less construction site waste than cardboard packaging, brick, or lumber.
- Ply Gem facilities reuse and recycle production scraps, pallets, and packaging material, reducing raw material needs and landfill use.



**ENERGY
EFFICIENCY:**

- Vinyl siding requires less energy to manufacture per square foot than brick and mortar.¹
- Due to lighter weight, vinyl siding requires less fuel to transport than other cladding options.
- NAPCO® American Essence™ Premium Insulated Vinyl Siding adds an extra layer of continuous insulation to the exterior wall, increasing the efficiency of the wall system.



**LIFECYCLE BENEFITS
OF HOMES:**

- NAPCO® vinyl siding is durable and requires no site finish.
- When installed properly and under normal use, our products should never require painting or staining. They won't crack, peel, blister, or rot.

enviro snap SHOT

LEED FOR HOMES — POSSIBLE POINTS



LEED NEW CONSTRUCTION — POSSIBLE POINTS



NAHB STANDARDS — POSSIBLE POINTS



¹ *A Dozen Things You Might Not Know that Make Vinyl Siding Green,* page 10, Tad Radzinski, PE, LEED AP, and VSI. October 10, 2009.

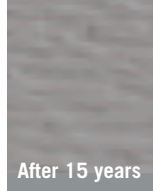
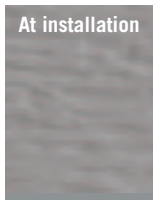


Signature
SERIES

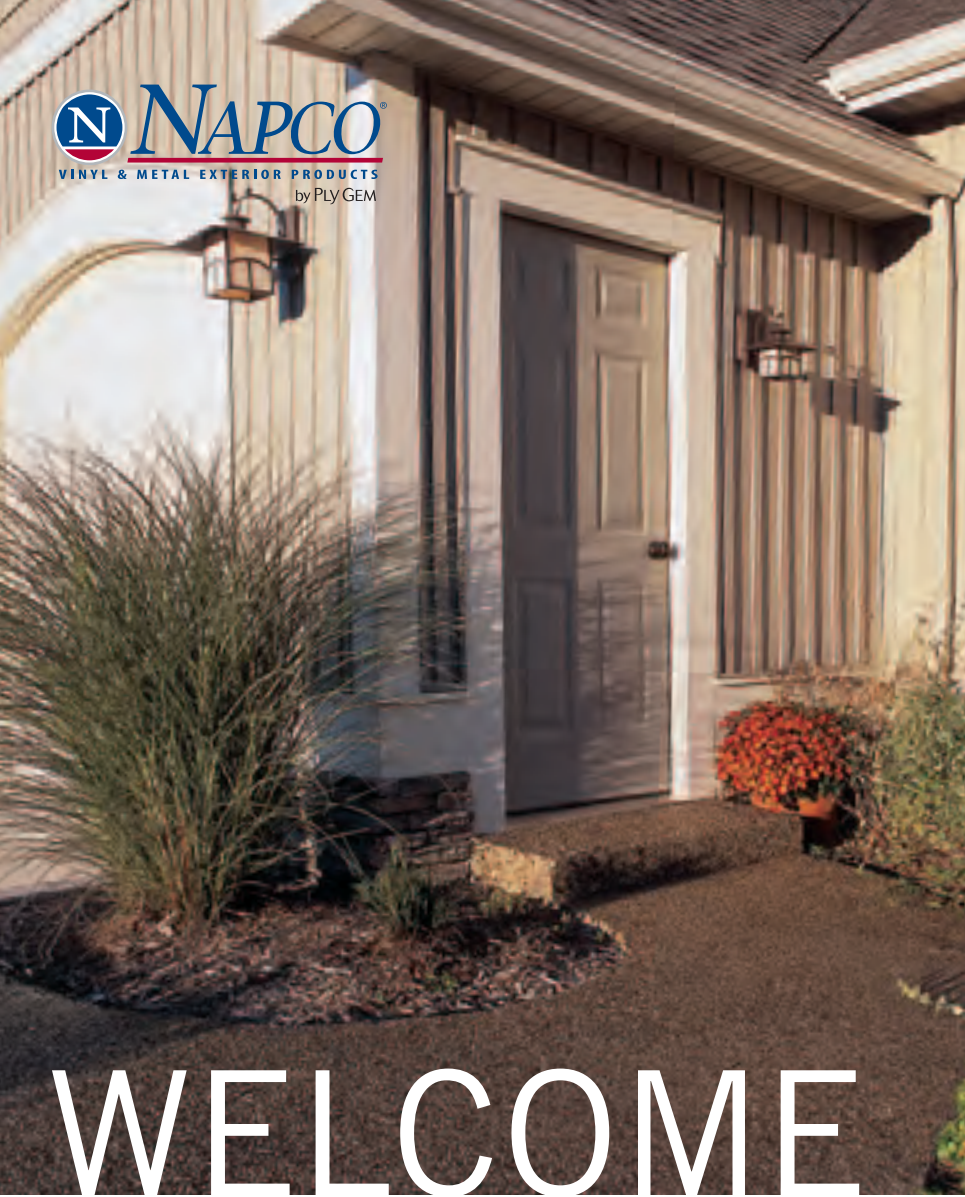
**rich. dark.
COLORS.**

Five dramatic, dark hues that remain beautiful season after season—that's the essence of NAPCO® Signature Series colors. Each panel is infused during manufacturing with **Luran® S ASA resin from BASF** to increase color retention and consistency, insuring a rich, beautiful finish that's equally fade-and weather-resistant.* All wrapped up in one strong yet striking package.

Signature Series color retention over time



BASF
The Chemical Company



WELCOME



Rustic Expression.

A touch traditional, absolutely stylish... nothing says "welcome" quite like American Accents Board & Batten Vinyl Siding from NAPCO®. Ideal as an accent or to finish the entire house, Board & Batten's signature decorative overlap brings a touch of lasting natural beauty to your home. All backed by our legendary performance and wind-resisting durability.*

What the Best Homes are Wearing®

A well-maintained look, without the work.

Enjoy the look of a home that is well-cared for every weekend...

without sacrificing your free time. Forget painting, scraping, and leaning ladders—with American Accents Board & Batten from NAPCO®, a great looking home is practically maintenance-free. What's more, it's worry-free, thanks to a Limited Lifetime Transferable Warranty from NAPCO®, a leading manufacturer of high-quality vinyl siding and exterior design products for over 45 years.

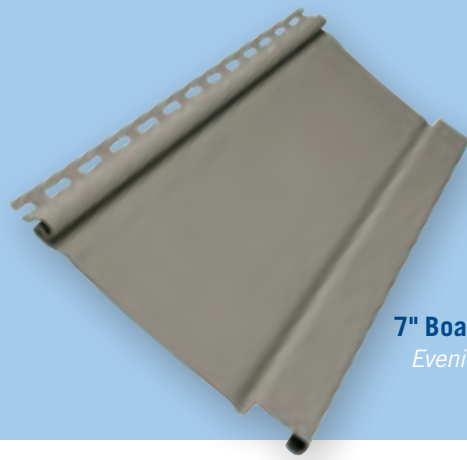


High tech and high style converge.

An attention to detail, tough construction and a full 7" profile combine to create a handsome facade that protects for years. American Accents Board & Batten vinyl siding is engineered, tested and manufactured using the latest technology available. The result is a beautifully protective shield that's durable, dent-resistant, and incredibly secure.



BOARD & BATTEN



7" Board & Batten
Evening Shadow

Rustic Expression:

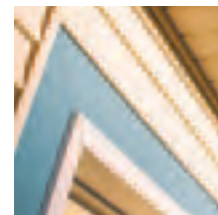
Enhance your home with Board & Batten vinyl siding by NAPCO®, available in the following profile.

Last look: It's all in the details.

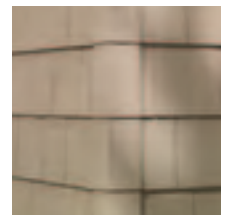
NAPCO® by Ply Gem offers a full line of attractive, durable, maintenance-free vinyl and metal exterior design products to complete the look of your home. From our weather-resistant Aluminum collection to our authentic Cedar Select® Shingle or Round Cut siding, we have everything you need. And that's not all. Our coordinated enhancements including Monticello Columns®, Richwood® Exterior Finishings, Ply Gem Stone® veneer, Gutter Warrior™ hanging system and Leaf Relief® gutter protection—all by Ply Gem—provide the perfect finish with minimum maintenance. More looks. Less work. That's Ply Gem.



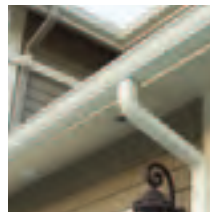
Cedar Select® Round Cut Siding



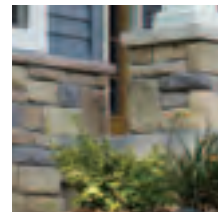
Aluminum Trim Coil



Cedar Select® Shingle Siding



Elbows, Downspouts and Gutter



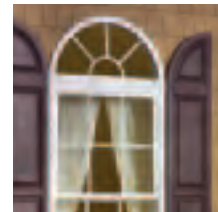
Ply Gem Stone



Woodgrain Embossed Fascia



Columns



Shutters, Vents, Mounting Blocks



Gutter Protection



2600 Grand Blvd., Suite 900
Kansas City, MO 64108
Phone: 800-78-NAPCO
Fax: 888-842-3991
www.napcoproducts.com



*Consult the VSI Website at www.vinylsiding.org for current list of certified products and colors. Due to printing limitations, product colors may not be exactly as shown. Contact your distributor for actual product samples. © Leaf Relief and Richwood are trademarks of Alcoa Home Exteriors, Inc. American Splendor, Monticello, Rigituck, XactFit, NAPCO, the NAPCO logo, and the "What the Best Homes are Wearing" slogan are trademarks of NAPCO, Inc. Ply Gem is a trademark of Ply Gem Industries, Inc. and/or its subsidiaries. ©NAPCO, Inc. 2012 2201071081101/BT/CG/0312